

Summer Fun Packet

What a great 1st year we had in Let's Play Music! Here are some optional summer activities to help retain the skills your child has learned this year, to keep them in the music practice habit, to and to get them ready for Green Turtle Shells this Fall!

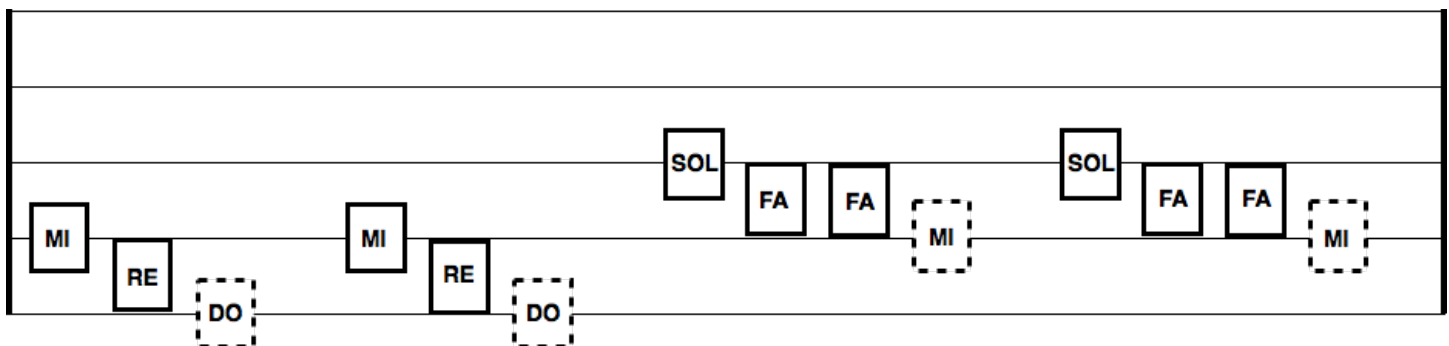
There are 8 weeks of practice activities included, so take your time and spread it out over the whole summer. (Doing one page every 1-2 weeks would be a good pace.) You can do a whole page in one sitting, or do a little each day throughout the week. Try to complete the whole packet before our next semester starts!

** Everyone who brings a completed summer packet on the first day of classes will get to choose a prize from my prize jar!*

Have a fun summer! I'm excited to see everyone and start on keyboards in the Fall!

1st Year - Summer Practice Activities

Week 1	Initial and Date
Listen (CD track in brackets – RB=Red Balloons CD, BB=Blue Bugs CD)	
<ul style="list-style-type: none"> • Great Big Red Balloon (RB-4) – sing and make your body move up and down with the music. 	
<ul style="list-style-type: none"> • Tambourine Train (RB-3) – make your feet match the rhythms. 	
<ul style="list-style-type: none"> • Baby Step, Leap (RB-24) – do the dance! 	
Bells	
<ul style="list-style-type: none"> • DO is Home – hear DO in your head, then sing it. Check with the DO bell. Sing “DO is home!” 	
<ul style="list-style-type: none"> • Let’s Play Music (BB-1) – sing the song and play the <u>lowercase</u> sol-la-ti-do bells at the end of the song. Sing again using solfège hand signs for the melodic pattern. 	
<ul style="list-style-type: none"> • Hickety Pickety – play SOL-MI and sing hello to yourself and everyone in your family. Try and match the rhythm to each person’s name. (RB-2) 	
<ul style="list-style-type: none"> • Hear How the Bells – play DO-SOL and sing “ding-dong”. Then play DO-SOL and sing the melody. (RB-11) 	
Fun	
<ul style="list-style-type: none"> • Staff Game (p.64, BB book) – use dimes or small candies on the staff to make a major scale going up, then a major scale going down. Notice it is all baby steps. Play the major scale on your bells! 	
<ul style="list-style-type: none"> • Bug Cards – use your bug cards to find all the bugs in the <u>barnyard animal rhythms</u> (RB-12) (example: “quacky-quacky-quack-quack” = caterpillar, beetle.) 	
Name That Tune	
<p>Use your knowledge of steps and skips to read the bell music. Color in the bells. Play the solid box <input type="checkbox"/> like a bug. Play the dotted box <input type="checkbox"/> like a slug. Can you recognize the song? Write the name here:</p> <p>Song: _____</p>	



A musical staff with four lines. The following syllables are placed on the staff from left to right: MI (solid box), RE (solid box), DO (dotted box), MI (solid box), RE (solid box), DO (dotted box), SOL (solid box), FA (solid box), FA (solid box), MI (dotted box), SOL (solid box), FA (solid box), FA (solid box), MI (dotted box).

1st Year - Summer Practice Activities

Week 2	Initial and Date
Listen (CD track in brackets – RB=Red Balloons CD, BB=Blue Bugs CD)	
<ul style="list-style-type: none"> • Primary Chords Song (RB-6) – do the red/blue/yellow hand actions for each chord as you sing along. 	
<ul style="list-style-type: none"> • Barnyard Boogie (RB-12) – try singing the rhythms using bug names. 	
<ul style="list-style-type: none"> • Scotland's Burning (RB-20) – sing with the CD, try the solfege hand signs for the second verse. 	
Bells	
<ul style="list-style-type: none"> • DO is Home – hear DO in your head, then sing it. Check with the DO bell. Sing “DO is home!” 	
<ul style="list-style-type: none"> • Hickety Pickety – play MI-RE-DO-DO and sing hello to yourself and everyone in your family. 	
<ul style="list-style-type: none"> • Three Blind Mice – play MI-RE-DO-wait, MI-RE-DO-wait while singing the song. (RB-9) 	
Fun	
<ul style="list-style-type: none"> • Color the chord triangles on the next page (or make your own from colored paper!) Point to them as you sing Chords in Pieces and Primary Chords Song (BB-11,12) 	
<ul style="list-style-type: none"> • Play Who Took the Cookie with as many people as you can. Stay on the beat! (RB-28) 	
Name That Tune	
Use your knowledge of steps and skips to read the bell music. Color in the bells. Note: you need to use the lower case bells for this song. Play the solid box <input type="checkbox"/> like a bug. Play the dotted box <input type="checkbox"/> like a slug. Can you recognize the song? Write the name here:	
Song: _____	

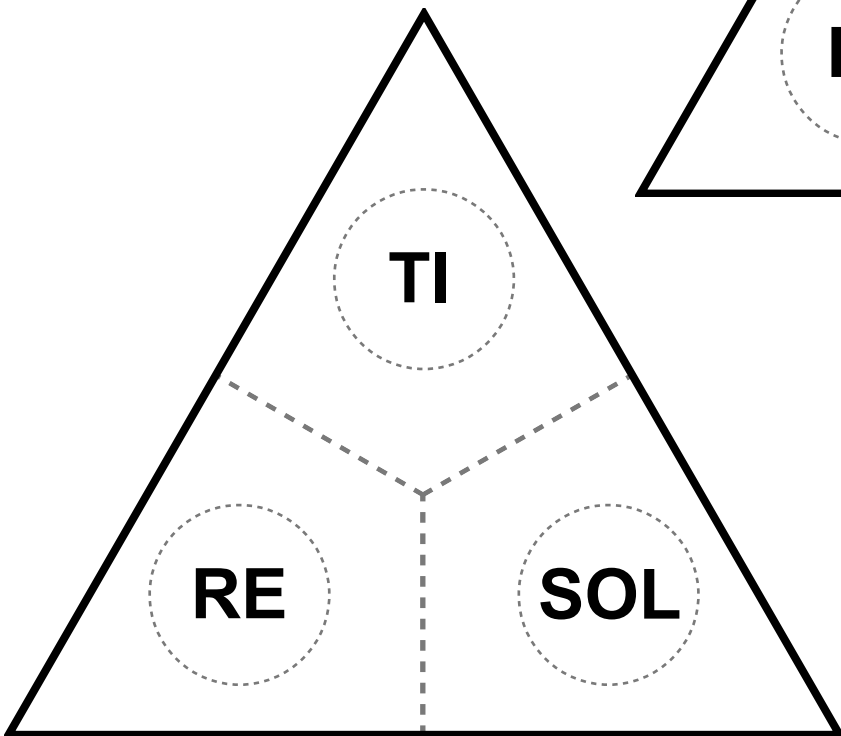
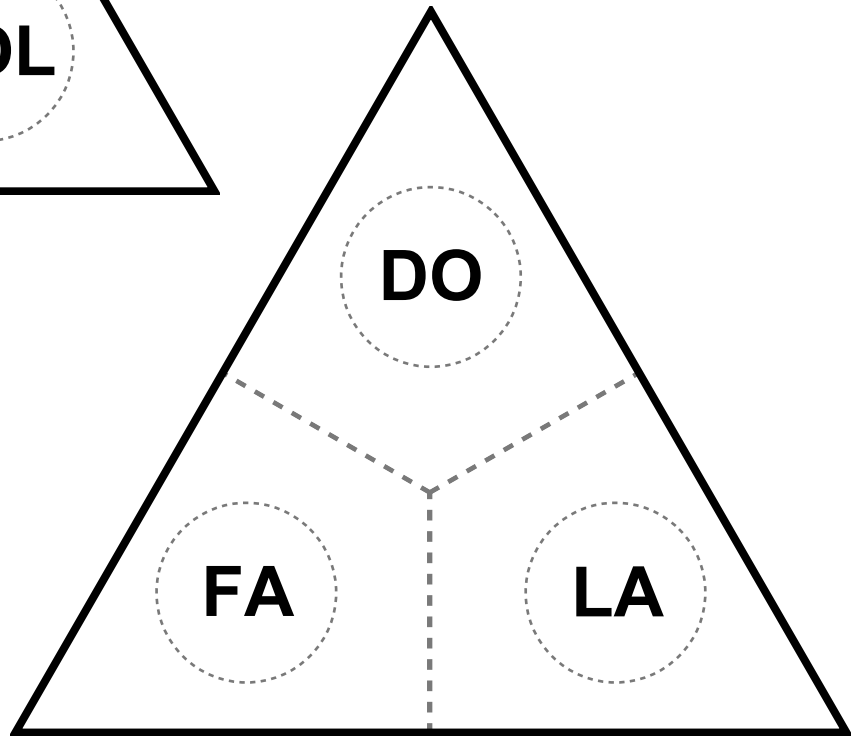
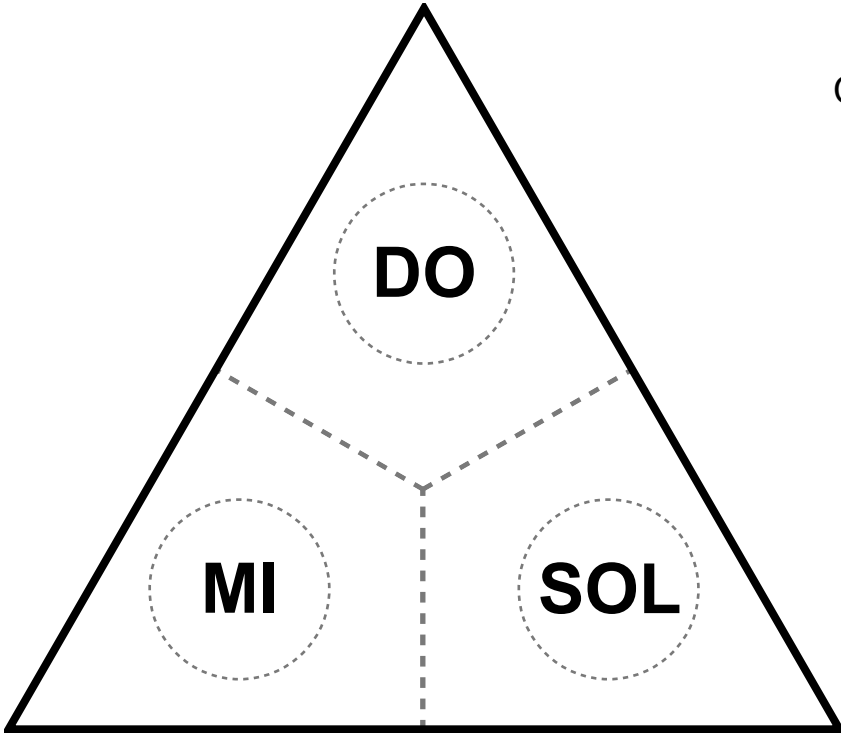
	mi	mi	re	re	<input type="checkbox"/>
<input type="checkbox"/> do	<input type="checkbox"/> do	<input type="checkbox"/> do			
<input type="checkbox"/> sol	<input type="checkbox"/> la	<input type="checkbox"/> la	<input type="checkbox"/>	<input type="checkbox"/>	<input type="checkbox"/>

* lower case bells

Week 2 - Chord Triangles

Color each chord, then point to them as you sing **Chords in Pieces** and **Primary Chord Song** (BB-11,12)

(or make your own triangles from colored paper)



Week 3	Initial and Date
--------	------------------

Listen (CD track in brackets – RB=Red Balloons CD, BB=Blue Bugs CD)

- **Do, Re, Mi** (BB-5) – stand and make baby steps with your feet as you sing the song, then do the hand signs with the fast part!
- **Can't Bug Me** (BB-7) – clap the bugs as you chant along, try using different instruments.
- **Echo Ed** (RB-13) – echo what you hear, make sure to do the solfège hand signs.

Bells

- **DO is Home** – hear DO in your head, then sing it. Check with the DO bell. Sing “DO is home!”
- **Let's Play Music** (RB-1) – sing along and play the lowercase mi-re-do and sol-sol-do bells. Sing again using solfège hand signs for the melodic patterns.
- **Scotland's Burning** – play sol-sol-do (lower case) at the beginning and end of the song. Sing again and leave out a part, just sing it in your head. (RB-20)
- **I've Been to Harlem** – play a major chord (DO-MI-SOL) with 2 mallets and a pencil while singing the major verse. Then play a minor chord (RE-FA-LA) while singing the minor verse.

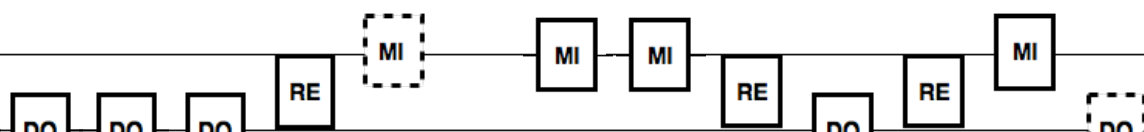
Fun

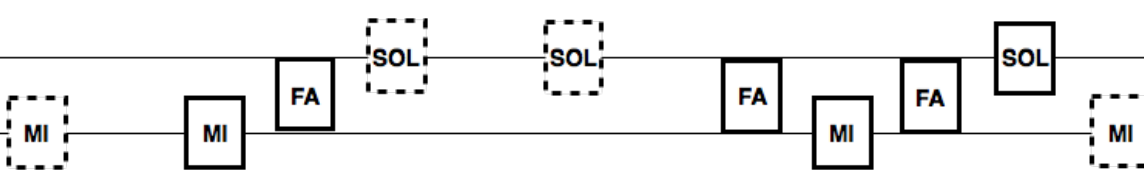
- Perform your favorite **puppet show** from Red Balloons! (RB-7,23; RB book p.63-64)
- **Bug Cards** – put the cards around the room. Have a parent clap a bug card without saying the name and you find the bug. Now switch! You clap and your parent finds the bug card!

Name That Tune

Use your knowledge of steps and skips to read the bell music. Color in the bells. Play the solid box like a bug. Play the dotted box like a slug. Can you recognize the song? Write the name here:

Song: _____





Week 4	Initial and Date
--------	------------------

Listen (CD track in brackets – RB=Red Balloons CD, BB=Blue Bugs CD)

- **Bill Grogan’s Goat** (BB-16) – sing and make 4 bouncy rainbows during the 1st verse, then 1 long rainbow during the second verse.
- **Jungle Rhythm** (BB-15) – make the sounds and actions of all the animals walking in the jungle.
- **Dinosaur Song** (BB-9) - sing with the CD, try the solfege hand signs for the second verse.

Bells

- **DO is Home** – hear DO in your head, then sing it. Check with the DO bell. Sing “DO is home!”
- **Do, Re, Mi** – play the major scale up and down while singing the song, then play the fast part! (BB-5)
- **Old Paint** – play the red chord (DO-MI-SOL) while singing the song. (BB-6)

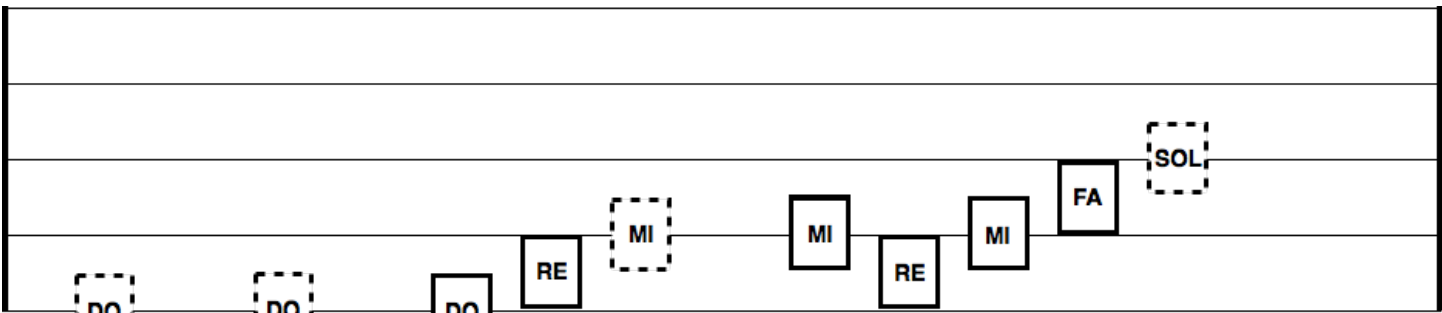
Fun

- **Staff Game** – use dimes or small candies with the staff on p.64 in your BB book to make baby-steps, skips, and leaps. Try playing them on your bells!
- **Jungle Rhythm** – make your own rhythm instruments using ideas from the following page. Use your instruments to make your own Jungle Rhythm! You can also print and color the jungle animals.

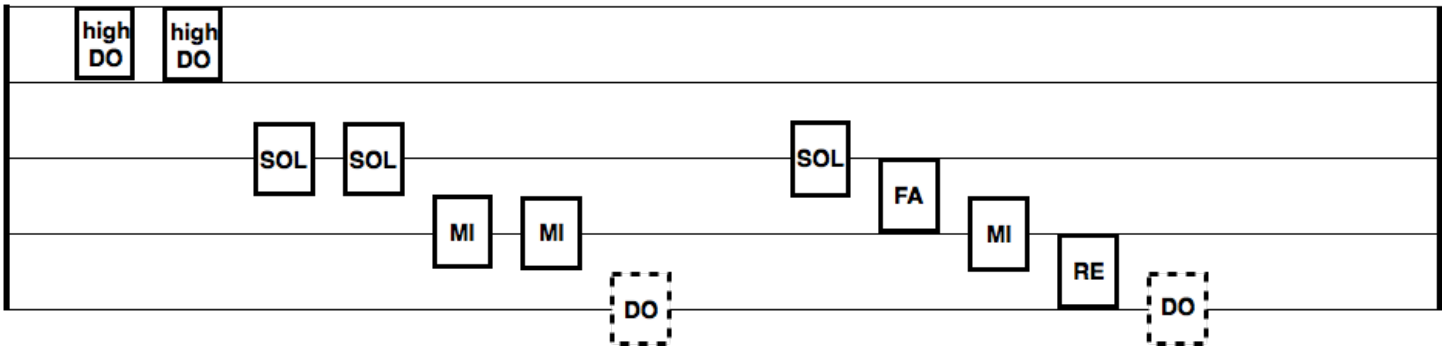
Name That Tune

Use your knowledge of steps and skips to read the bell music. Color in the bells. Play the solid box like a bug. Play the dotted box like a slug. Can you recognize the song? Write the name here:

Song: _____



A musical staff with a treble clef. The notes are: DO (dotted), DO (dotted), DO (solid), RE (solid), MI (dotted), MI (solid), RE (solid), MI (solid), FA (solid), SOL (dotted).



A musical staff with a treble clef. The notes are: high DO (solid), high DO (solid), SOL (solid), SOL (solid), MI (solid), MI (solid), DO (dotted), SOL (solid), FA (solid), MI (solid), RE (solid), DO (dotted).

Week 4 - Rhythm Instrument Ideas

Here are some instruments you can make using items around your home or from the craft store. See if you can come up with other ideas to create instruments that sound like our jungle animals!

ELEPHANT

Balloon Drum – cut the bottom part off a large balloon and stretch it over the opening of a big can (#10, oatmeal, etc.) Attach it with a rubber band or strong tape.

LION

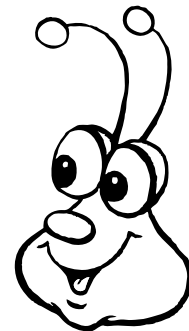
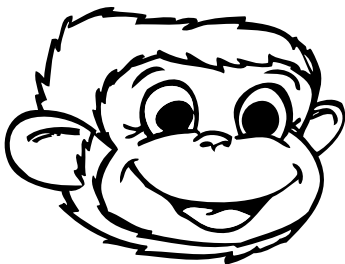
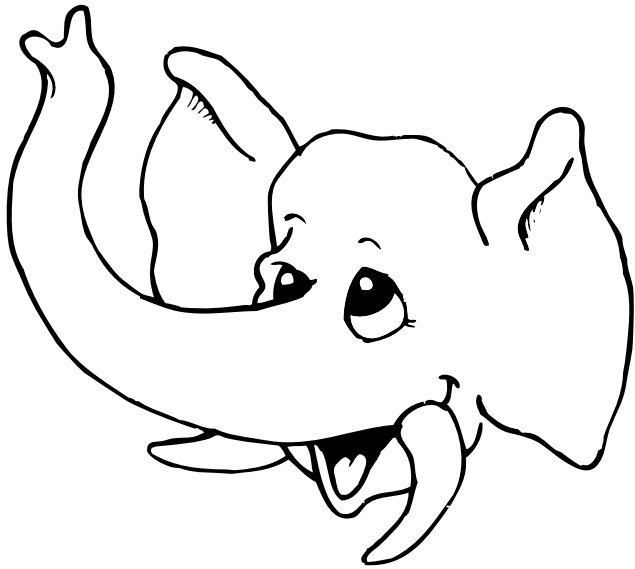
Rhythm Sticks – cut a wooden dowel into two 12” pieces. For fun, you can paint or decorate with colored tape. You can also use wooden spoons!

MONKEY

Egg Shakers – fill two plastic Easter eggs with dried beans, rice, or other grains. Tape shut securely.

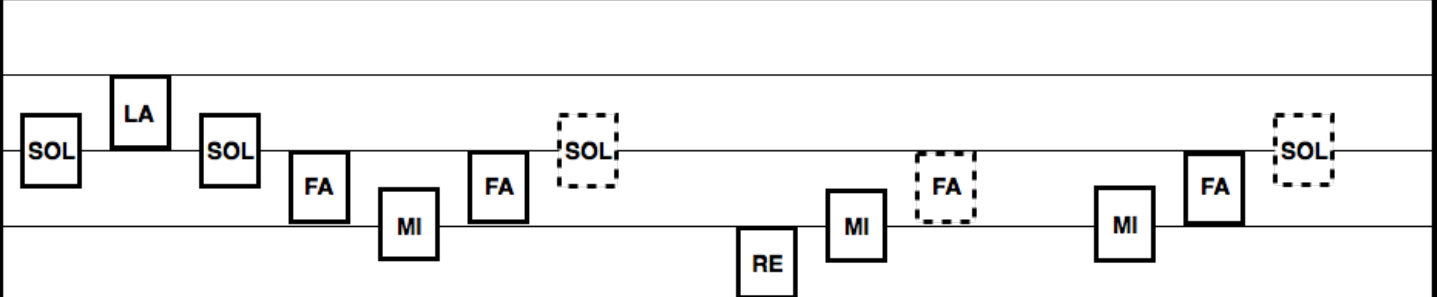
CICADA

Jingle Bell Bracelet – slide small jingle bells onto a pipe cleaner, evenly spaced. Wind it with another pipe cleaner (to keep the bells in place) and form into a bracelet.

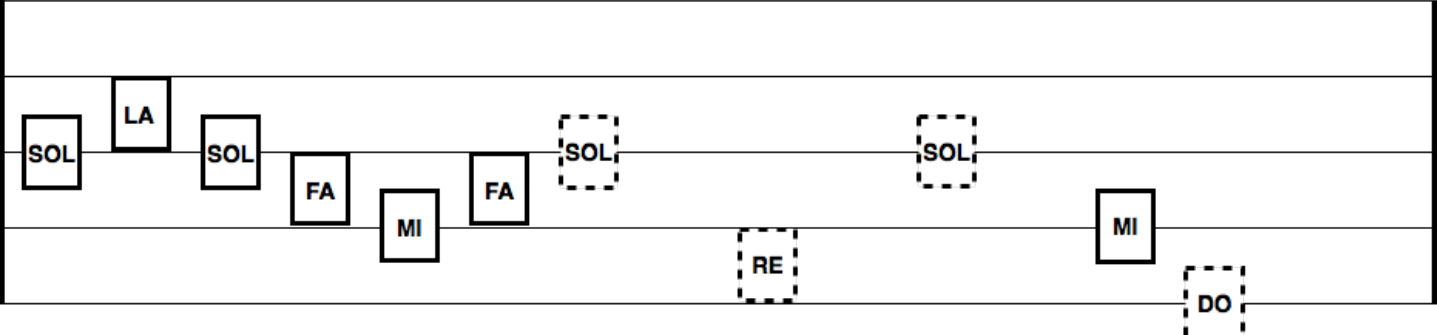


1st Year - Summer Practice Activities

Week 5	Initial and Date
Listen (CD track in brackets – RB=Red Balloons CD, BB=Blue Bugs CD)	
<ul style="list-style-type: none"> • El Gallo (BB-20) – try to sing in harmony with the CD – CD starts first, then you start singing. 	
<ul style="list-style-type: none"> • BINGO (BB-26) – sing and clap along - what bugs do you hear? Sing using the bug names. 	
<ul style="list-style-type: none"> • Clickety Clack (BB-8) – sing with hand actions, first with train words and then with solfege syllables. 	
Bells	
<ul style="list-style-type: none"> • DO is Home – hear DO in your head, then sing it. Check with the DO bell. Sing “DO is home!” 	
<ul style="list-style-type: none"> • A Frog Went a-Hoppin’ – play DO-SOL-‘high DO’-SOL while singing the song. (BB-21) 	
<ul style="list-style-type: none"> • Are You Sleeping – play do-sol-do-rest (lower case) while singing the song. (BB-23) 	
Fun	
<ul style="list-style-type: none"> • Staff Game – cut out the staff instruction cards (next page). Use p.64 in your BB book and put a dime or small candy on the 1st line. Pick up a card and move how it says. Stop when you reach the 5th line! 	
<ul style="list-style-type: none"> • Bug Cards – have a parent clap a bug, and you name which one it is. Work up to three bugs in a row. 	
Name That Tune	
<p>Use your knowledge of steps and skips to read the bell music. Color in the bells. Play the solid box <input type="checkbox"/> like a bug. Play the dotted box <input type="checkbox"/> like a slug. Can you recognize the song? Write the name here:</p> <p>Song: _____</p>	



A musical staff with five lines. The following solfege syllables are placed on the staff: SOL (solid box), LA (solid box), SOL (solid box), FA (solid box), MI (solid box), FA (solid box), SOL (dotted box), RE (solid box), MI (solid box), FA (dotted box), MI (solid box), FA (solid box), SOL (dotted box).



A musical staff with five lines. The following solfege syllables are placed on the staff: SOL (solid box), LA (solid box), SOL (solid box), FA (solid box), MI (solid box), FA (solid box), SOL (dotted box), SOL (dotted box), MI (solid box), RE (dotted box), MI (solid box), DO (dotted box).

Week 5 - Staff Instruction Cards

**Move up
1 step**

**Move down
1 step**

**Move up
1 skip**

**Move down
1 skip**

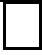

**Move up
2 skips**

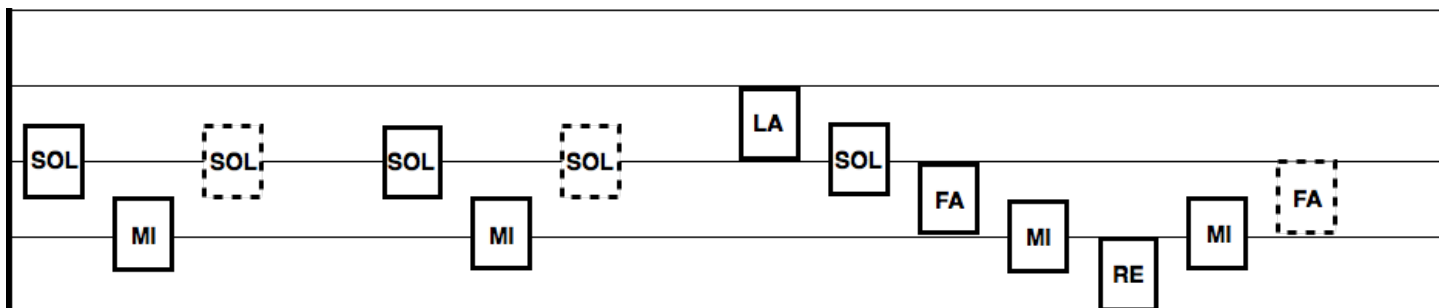
**Move down
2 skips**

**Move up
3 steps**

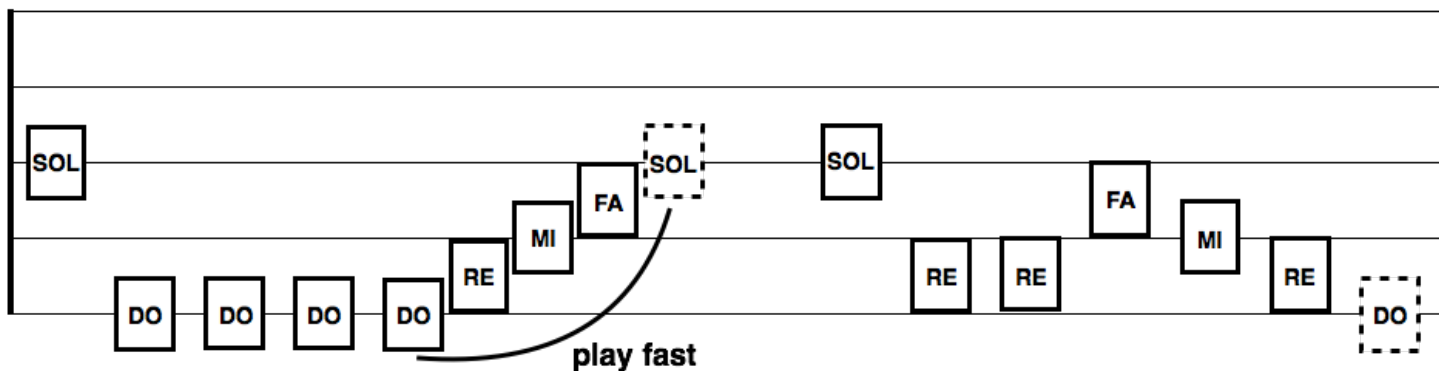
**Move down
3 steps**

1st Year - Summer Practice Activities

Week 6	Initial and Date
Listen (CD track in brackets – RB=Red Balloons CD, BB=Blue Bugs CD)	
<ul style="list-style-type: none"> • On Top of Spaghetti (BB-31) – try singing the chords in pieces (pg 59) with the guitar on the CD . 	
<ul style="list-style-type: none"> • Echo Ed (BB-14) – echo what you hear. Sing and do the solfege hand signs. 	
<ul style="list-style-type: none"> • How to Skip (BB-3) – skip as you sing with the CD. 	
Bells	
<ul style="list-style-type: none"> • DO is Home – hear DO in your head, then sing it. Check with the DO bell. Sing “DO is home!” 	
<ul style="list-style-type: none"> • Dinosaur Song – play the steps and skips going up and down. (BB-9, p.57 BB book) 	
<ul style="list-style-type: none"> • The Ants Go Marching – play sol-la-ti-do (lower case) while singing the song. (BB-30) 	
Fun	
<ul style="list-style-type: none"> • Perform your favorite puppet show from Blue Bugs! (BB-4,22; BB book p.50-51) 	
<ul style="list-style-type: none"> • Do the melodic patterns matching game on the next page, then sing each pattern with hand signs! 	
Name That Tune	
<p>Use your knowledge of steps and skips to read the bell music. Color in the bells. Play the solid box  like a bug. Play the dotted box  like a slug. Can you recognize the song? Write the name here:</p> <p>Song: _____</p>	



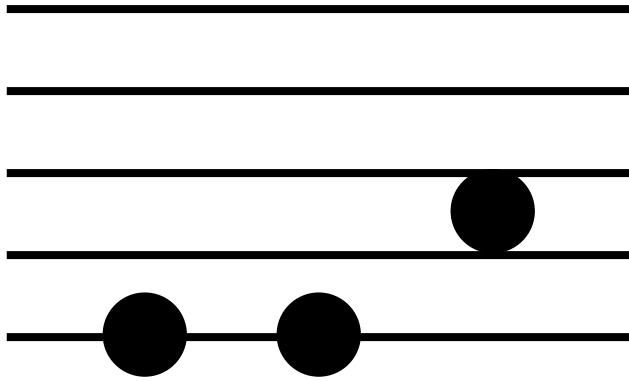
A musical staff with two lines. The notes are represented by boxes with solfege syllables: SOL, MI, SOL, MI, SOL, LA, SOL, FA, MI, RE, MI, FA. The first SOL, MI, SOL, MI, SOL, LA, SOL, MI, RE, MI, and the first FA are in solid boxes. The second SOL, the second MI, and the second FA are in dotted boxes.



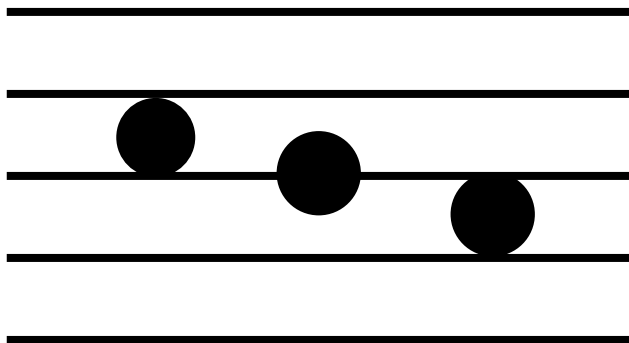
A musical staff with two lines. The notes are represented by boxes with solfege syllables: SOL, DO, DO, DO, DO, RE, MI, FA, SOL, SOL, RE, RE, FA, MI, RE, DO. The first SOL, the first DO, the second DO, the third DO, the fourth DO, the first RE, the first MI, the first FA, the first SOL, the second SOL, the first RE, the second RE, the second FA, the second MI, the second RE, and the second DO are in solid boxes. The second SOL and the second DO are in dotted boxes. A curved arrow points from the first RE to the first SOL with the text "play fast" below it.

Weeks 6 and 7 - Melodic Patterns

Draw a line to match each pattern to its description and solfege name.
Sing each pattern with hand signs!



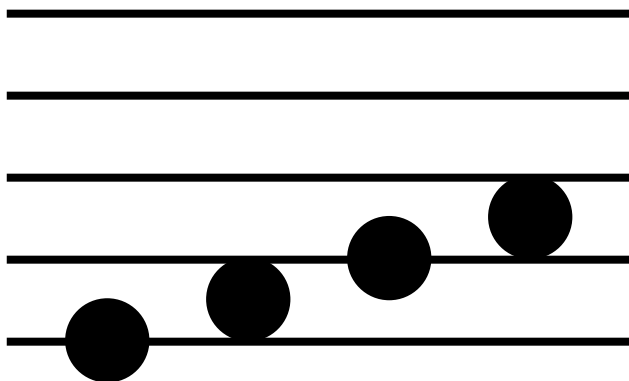
**baby-steps
going down**



sol-la-ti-do

sol-sol-do

**ba-by
steps up**



**same-same
leap up**

mi-re-do

Week 7	Initial and Date
--------	------------------

Listen (CD track in brackets – RB=Red Balloons CD, BB=Blue Bugs CD)

- **Ding Dong** (RB-15) – sing along and do the echos after “Hello”
- **Baby Butterfly** (BB-27) – sing along and clap the butterflies in the first verse, then try clapping all the bug names during the second verse.
- **Do, Re, Mi** (BB-5) – do the solfege hand signs as you sing the long held notes. Dance to the fast “Do, Mi, Mi” part at the end, or try to do the hand signs!

Bells

- **DO is Home** – hear DO in your head, then sing it. Check with the DO bell. Sing “DO is home!”
- **Dinosaur Song** – play the steps and skips going up and down. (BB-9, p.57 BB book)
- **Melodic Patterns** – turn to the previous page and play each pattern on your bells (lower case), then sing each pattern with hand signs!

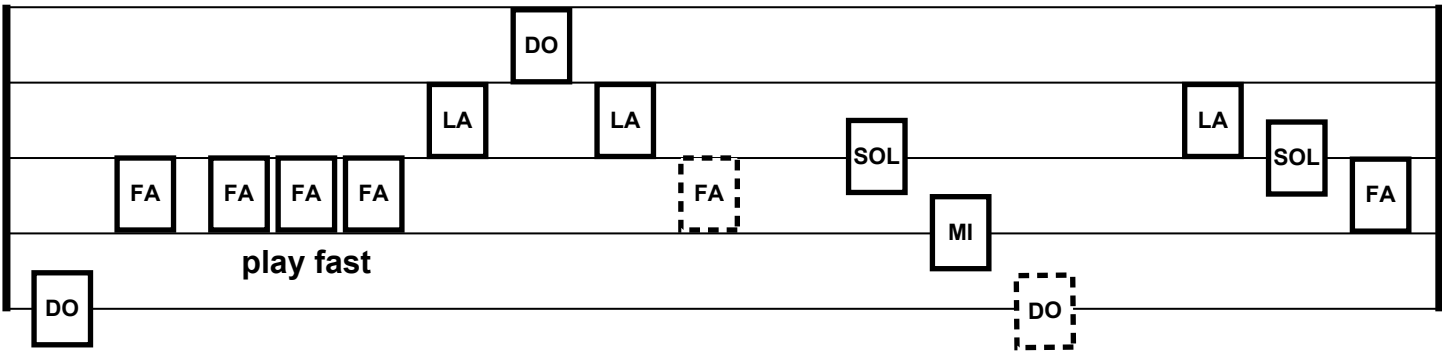
Fun

- **The Ants Go Marching** (BB-30) – march around the room as you sing along!
- **Bug Cards** – lay out the bugs in any order, then match them with their notation cards (on next page). Clap the rhythm you made, then mix them up and try it again!

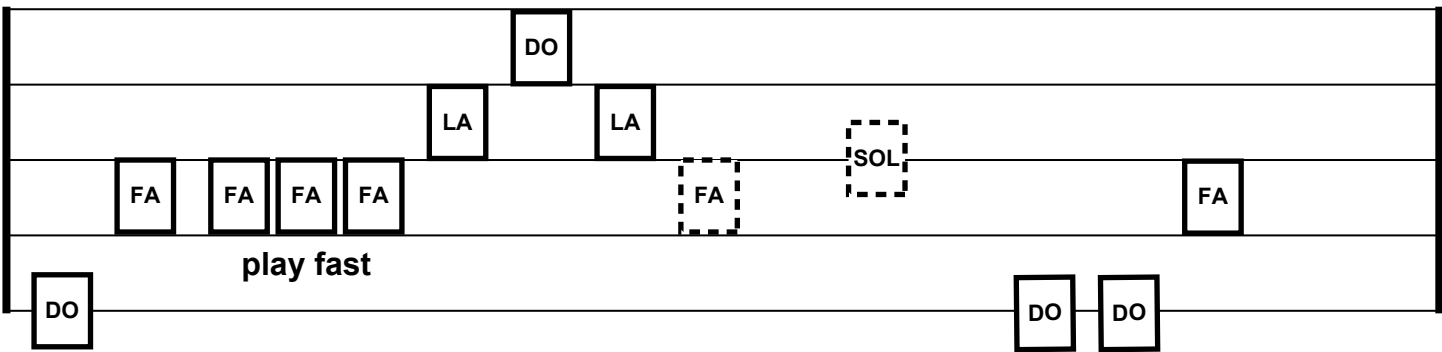
Name That Tune

Use your knowledge of steps and skips to read the bell music. Color in the bells. Play the solid box like a bug. Play the dotted box like a slug. Can you recognize the song? Write the name here:

Song: _____

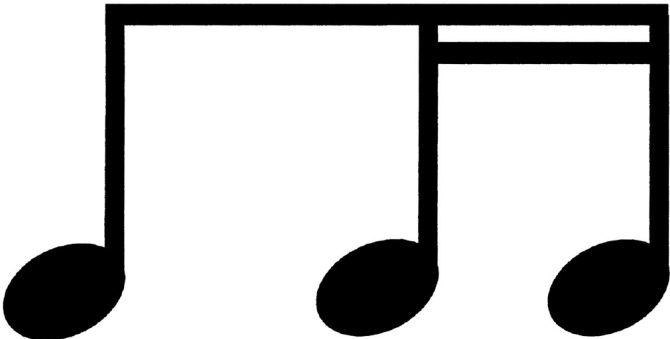
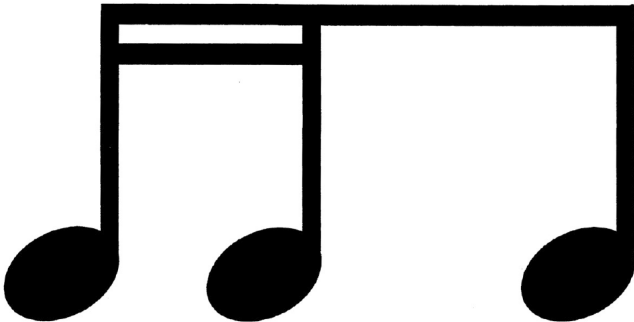


Musical notation for 'Ding Dong' on a staff. Solfege syllables are in boxes: DO, LA, LA, SOL, LA, SOL, FA, MI, DO. A 'play fast' instruction is present. Some boxes are solid, some are dotted.



Musical notation for 'Baby Butterfly' on a staff. Solfege syllables are in boxes: DO, LA, LA, SOL, FA, FA. A 'play fast' instruction is present. Some boxes are solid, some are dotted.

Week 7 - Bug Notation Cards



Week 8	Initial and Date
--------	------------------

Listen (CD track in brackets – RB=Red Balloons CD, BB=Blue Bugs CD)

- **May There Always Be Me** (RB-14) – rock to the slow, steady beat as you sing both verses. Sing “ooo” with rounded owl beak lips for the instrumental part at the end.
- **A-Hunting We Will Go** (RB-16) – march to the beat! Hug a stuffed animal when the song says, “we’ll catch a fox”, or toss the stuffed animal in the air and catch it when the song says “catch”!
- **BINGO** (BB-26) – sing a clap along - what bugs do you hear? Sing using the bug names.

Bells

- **DO is Home** – hear DO in your head, then sing it. Check with the DO bell. Sing “DO is home!”
- **A Frog Went a-Hoppin’** – play DO-SOL-’high DO’-SOL while singing the song. (BB-21)
- **Do, Re, Mi** (BB-5) – try to play the fast “Do, Mi, Mi” part at the end of the song. Use BB p.65 for help!

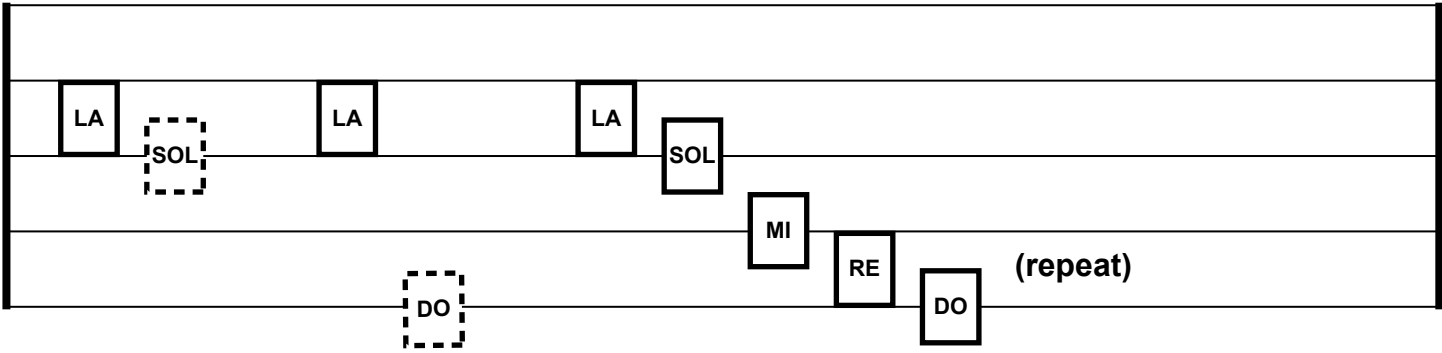
Fun

- **Solfège Quiz** – cut out the solfège cards on next page. Mix them up and quiz yourself on the hand signs. Put the cards in any order and play them on the bells to hear how it sounds!
- Do the **Hokey Pokey!** (BB-18) – Remember to sing and sign “sol-sol-sol-la-ti-do” at the end!

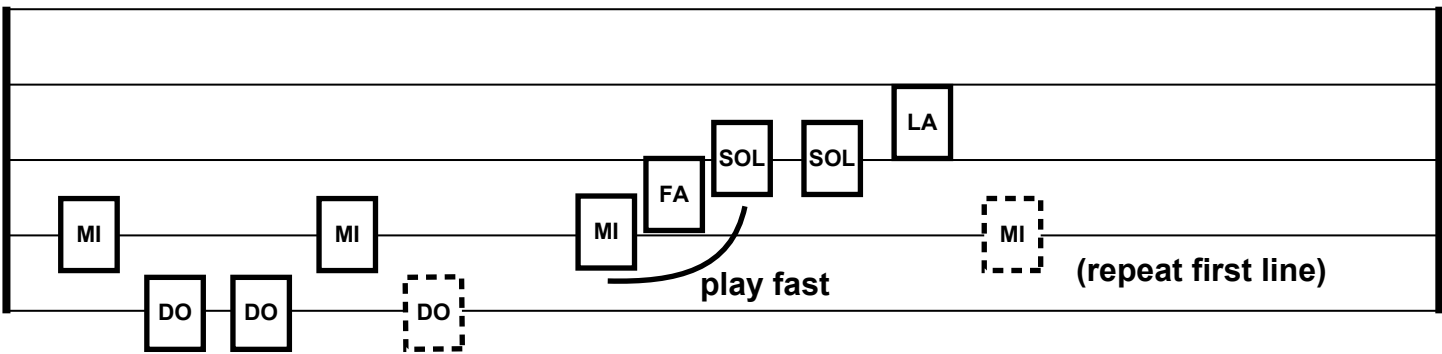
Name That Tune

Use your knowledge of steps and skips to read the bell music. Color in the bells. Play the solid box like a bug. Play the dotted box like a slug. Can you recognize the song? Write the name here:

Song: _____



A musical staff with four lines. Notes are placed on the lines and spaces. From left to right: LA (solid box) on the first space, SOL (dotted box) on the first line, LA (solid box) on the second space, LA (solid box) on the second line, SOL (solid box) on the third space, MI (solid box) on the third line, RE (solid box) on the fourth space, and DO (solid box) on the fourth line. A dotted box for DO is on the first line. The word "(repeat)" is written to the right of the final DO note.



A musical staff with four lines. Notes are placed on the lines and spaces. From left to right: MI (solid box) on the first line, DO (solid box) on the first space, DO (solid box) on the first space, MI (solid box) on the second line, MI (solid box) on the second line, FA (solid box) on the second space, SOL (solid box) on the third space, SOL (solid box) on the third space, LA (solid box) on the third line, and MI (dotted box) on the first line. A curved arrow labeled "play fast" is under the MI, FA, and SOL notes. A solid box for MI is on the first line, followed by "(repeat first line)".

Week 8 - Solfege Cards

DO

RE

MI

FA

SOL

LA

TI

DO